

# Eyre Highway Streetscape Wudinna

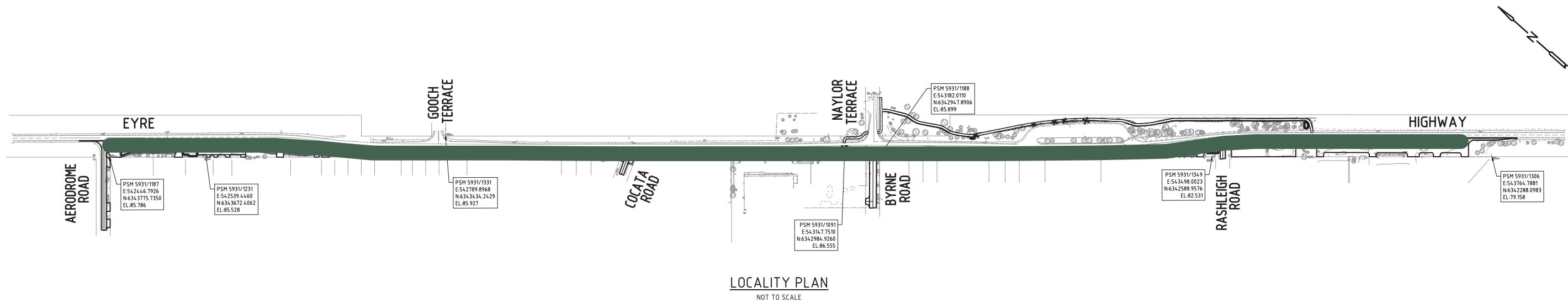
PROJECT	EYRE HIGHWAY STREETScape, WUDINNA
REF NO.	19.014
CLIENT	WUDINNA DISTRICT COUNCIL
DATE	11.09.2020
ISSUE	CONCEPT

LANDSKÄP

Urban Design & Landscape Architecture



Scope



Desired Character

- ‘Green oasis’ that attracts people.
- A streetscape that celebrates the local character but also provides a new landscape that is distinct and has a more urban / regional feel than the rural surrounds.
- Use of local materials.
- The streetscape should create visual interest as well as important greening around key nodes - to encourage people to stop and enjoy.

Landscape

- Low maintenance ‘arid smart’ landscape.
- Use of native grasses, shrubs and groundcovers that look good year round and repair / spread naturally.
- New evergreen tree planting.
- Irrigation to key areas.
- Irrigated lawn used in higher profile locations.
- Use of local rocks and gravels in and around the basins to create interest.
- New planting within the basins to break up the larger hardscape areas.
- Boulders and rocks to protect verges from wayward vehicle movement.



Landscape Character



1. Wudinna landscape



Materials + Planting



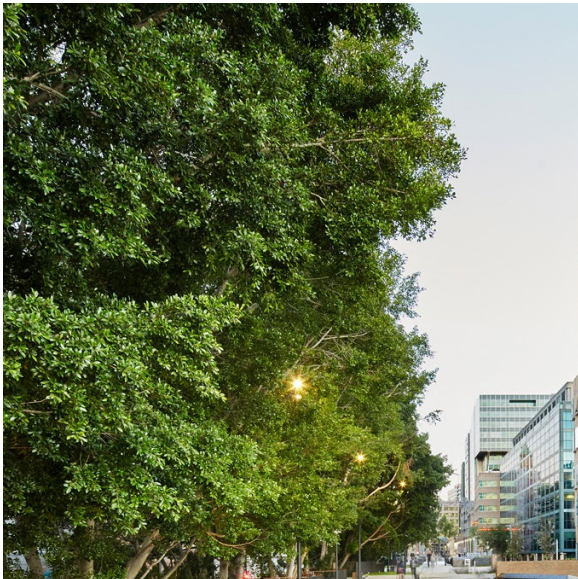


Possible  
Trees

DRAFT LIST, SUBJECT TO DISCUSSION



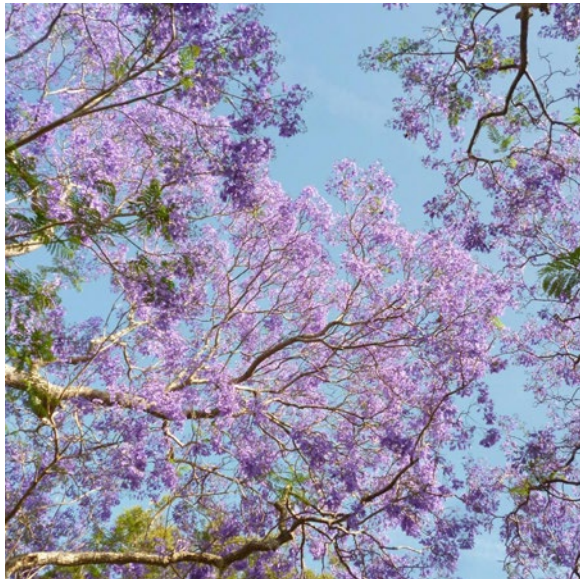
***Cupaniopsis anacardioides*, Tuckeroo**  
Round evergreen  
H 7m W 5m



***Ficus hillii*, Hills Fig**  
Small leafed fig tree  
H 8m W 5m



***Ficus platypoda*, Rock Fig**  
Native large leafed fig tree  
H 8m W 5m



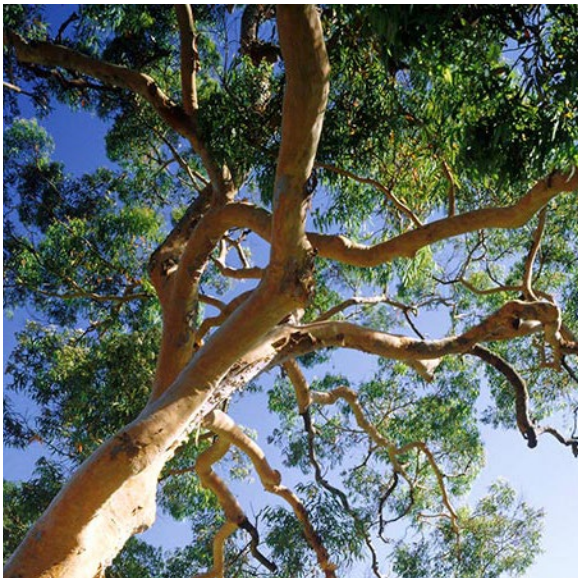
***Jacaranda mimosifolia***  
Robust summer deciduous tree  
H 10m W 7m



***Melia azedarach* 'Elite', White Cedar**  
Low fruiting upright variety  
H 10m W 8m



***Brachychiton rupestris*, Bottle Tree**  
Native feature tree  
H 10m W 5m



***Angophora costata*, Sydney Red Gum**  
Tall and clean gum  
H 15m W 10m



***Corymbia citriodora*, Lemon Scented**  
Tall and clean gum  
H 15m W 8m

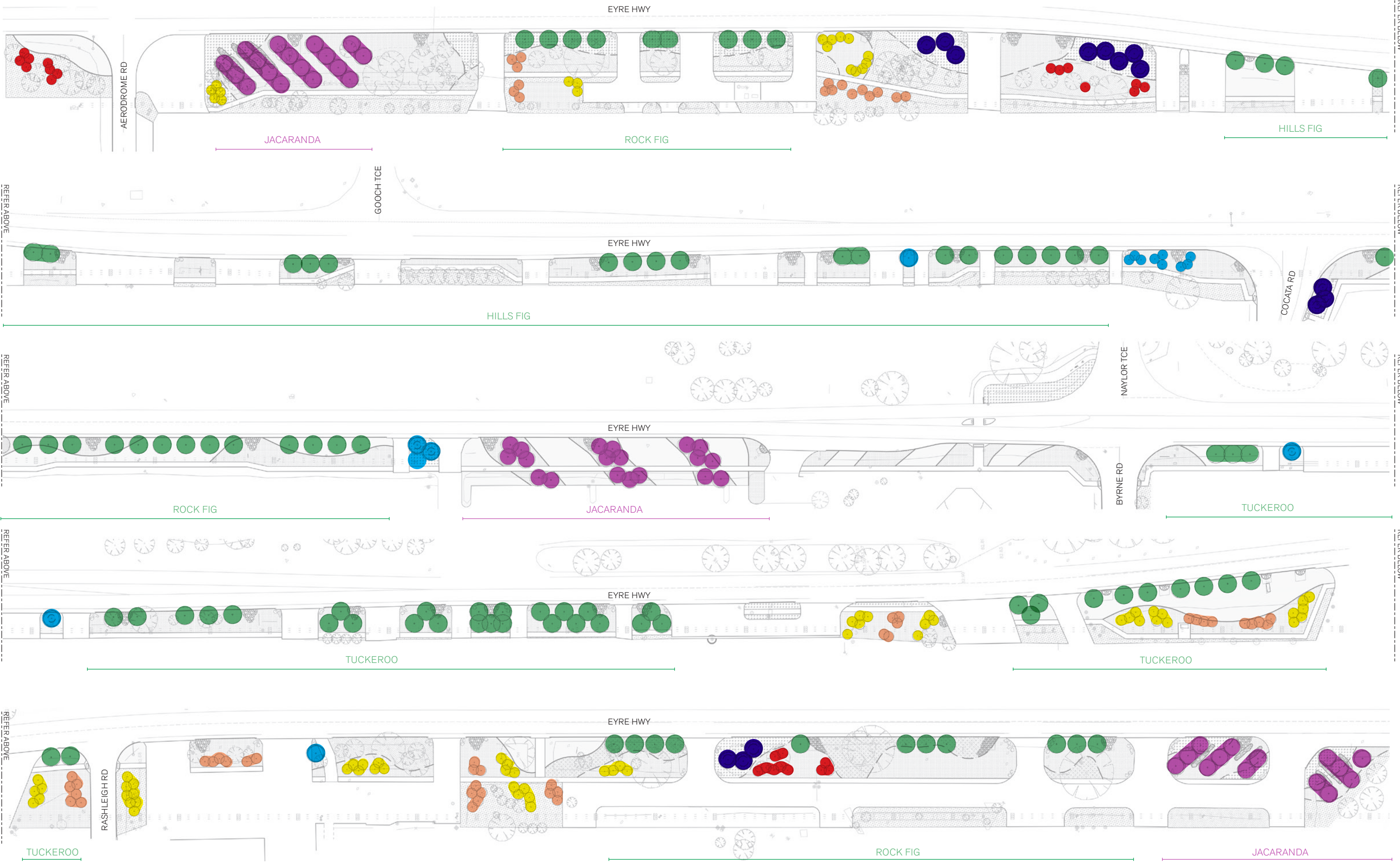


***Eucalyptus torquata*, Coral Gum**  
Compact native with large flowers  
H 6 W 3m



***Eucalyptus brockwayi*, Dundas Mahogany**  
Clean trunk native  
H 10 W 8m





	<i>Cupaniopsis anarcardioides</i> (Tuckeroo)	7 x 5m		<i>Jacaranda mimosifolia</i>	10 x 7m		<i>Angophora costata</i> (Sydney Red Gum)	15 x 10m
	<i>Ficus hilli</i> (Hills Fig)	8 x 5m		<i>Melia azedarach</i> 'Elite' (White Cedar)	10 x 8m		<i>Corymbia citriodora</i> (Lemon Scented Gum)	15 x 8m
	<i>Ficus platypoda</i> (Rock Fig)	8 x 5m		<i>Brachychiton rupestris</i> (Bottle Tree)	10 x 5m		Mixed local native	Various (< 10m)



Possible Native  
Planting

DRAFT LIST, SUBJECT TO DISCUSSION



**Anigozanthos hybrid**  
Flowering clump  
H 0.6m W 0.5m



**Carpobrotus glaucescens, Pigface**  
Succulent groundcover  
H 0.2m W 2m



**Chrysocephalum apiculatum, Common Daisy**  
Groundcover  
H 0.3m W 1.5m



**Banksia blechnifolia, Banksia**  
Prostrate groundcover  
H 0.4m W 2m



**Eremophila species**  
Prostrate groundcovers  
H 0.3m W 1m



**Grevillea juniperina, 'Gold Cluster'**  
Prostrate groundcover  
H 0.3m W 1m



**Grevillea, 'Gin Gin Gem'**  
Prostrate groundcover  
H 0.6m W 0.8m



**Crowea exalata, Wax Flower**  
Low shrub  
H 0.7m W 1m



**Goodenia Ovata, Gold Cover**  
Prostrate groundcover  
H 0.4m W 2m



**Myoporum parvifolium, Creeping Boobialla**  
Spreading groundcover  
H 0.1m W 1m



**Hibbertia sp.**  
Various



**Rhagodia spinescens, 'Aussie Flat Bush'**  
Prostrate groundcover  
H 0.4m W 1m



**Westringia fruticosa Mundi / Smokey / Low Horizon'**  
Low shrubs  
H 0.4m W 1m



**Grasses**  
Various species TBC



Possible  
Exotic Planting

DRAFT LIST, SUBJECT TO DISCUSSION



**Agave Atenuata**  
Spreading succulent  
H 0.4m W 0.4m



**Agave 'Blue Flame'**  
Spreading succulent  
H 0.4m W 0.4m



**Aloe 'Bush Baby Yellow'**  
Clumping succulent  
H 0.4m W 0.3m



**Aloe 'Outback Orange'**  
Clumping succulent  
H 0.4m W 0.3m



**Aloe 'Sea Urchin'**  
Clumping succulent  
H 0.4m W 0.3m



**Crassula arborescens**  
Clumping succulent  
H 0.4m W 0.4m



**Crassula 'Max Cook'**  
Clumping succulent  
H 0.4m W 0.4m



**Dymondia margaretae**  
Spreading groundcover  
H 0.1m



**Dracaena draco**  
Slow growing specimen  
H 10m W 4m



**Juniperus (prostrate form)**  
Groundcover  
H 0.4m W 2m



**Bougainvillea (dwarf form)**  
Flowering shrub  
H 1.5m W 1.5m



**Leucadendron salignum**  
Medium shrub  
H 1.5m W 1.5m



Materials



Coarse Gravel Mulch

8-10mm crushed rock



Rock Mulch

60-100mm rock



Feature Boulders

Large feature boulders



Organic Mulch

Locally sourced and produced organic coarse mulch



Steel Edging

Flush mild steel edging



Concrete Edging

Flush concrete edging



Concept Illustration 01  
Existing





Concept Illustration 01  
Proposed

- 1. Street trees (species to be confirmed)
- 2. Native planting in stormwater basin
- 3. Arid planting in gravel
- 4. Steel edging
- 5. Existing trees retained





Concept Illustration 02  
Existing

1. Existing stobie poles and power lines  
to be underground (by SAPN)





Concept Illustration 02  
Proposed

- 1. Native planting
- 2. Concrete edging
- 3. Irrigated turf
- 4. Feature trees





